

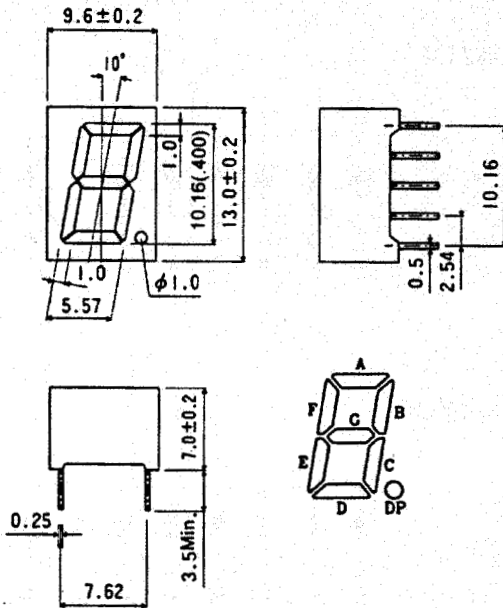
C/A-411X series ...

10.16mm(0.40inch) SINGLE DIGIT DISPLAY

MAIN FEATURES ;

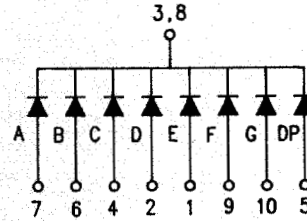
- ⊙ 10.16mm(0.40inch) HIGH CHARACTER
- ⊙ EXCELLENT CHARACTER APPERARANCE
- ⊙ COMMON CATHODE AND COMMON ANODE
- ⊙ I.C. COMPATABLE
- ⊙ LOW POWER CONSUMPTION

◆ PACKAGE DIMENSIONS



◆ PIN CONNECTION AND INTERNAL CIRCUIT

C-411X



A-411X



NOTES:

1. All Dimension are in millimeter(inches).
2. Tolerance is $\pm 0.25\text{mm}(0.010\text{'})$ unless otherwise specified.

◆ SELECTION GUIDE AND APPLICATION INFORMATION (RATINGS AT 25°C AMBIENT)

Part No.	Remark 1 Selection of Sur / Seg Color	Chip Raw Material	C.C. or C.A.	Wave Length λ p(nm)	Absolute Maximum Ratings					Electro-Optical Characteristics					Re- mark 2	
					$\Delta\lambda$ nm	Pd mW	If mA	If (Peak)	Vf(V) Min. Typ. Max.	If (Rec)	Iv(μ cd) Min. Typ.					
C-411R	GW,BW,BR,RR	GaAsP	Red	Common Cathode	655	40	110	40	200	1.5	1.7	2.0	10~20	200	450	
C-411H	GW,BW,BR,RR	GaP	Bright Red		700	90	45	15	50	1.7	2.1	2.8	5~10	300	550	
C-411E	GW,BW,BR,RR	GaAsP/GaP	Hi. effi Red	Common Anode	635	45	100	30	160	1.7	2.0	2.8	10~20	700	1800	
C-411G	GW,BW,GGn,BGn	GaP	Green		565	30	100	30	160	1.7	2.1	2.8	10~20	700	1600	
C-411Y	GW,BW,GY,BY	GaAsP/GaP	Yellow	Common Anode	585	30	100	30	160	1.7	2.1	2.8	10~20	600	1500	
A-411R	GW,BW,BR,RR	GaAsP	Red		655	40	110	40	200	1.5	1.7	2.0	10~20	200	450	
A-411H	GW,BW,BR,RR	GaP	Bright Red	Common Anode	700	90	45	15	50	1.7	2.1	2.8	5~10	300	550	
A-411E	GW,BW,BR,RR	GaAsP/GaP	Hi. effi Red		635	45	100	30	160	1.7	2.0	2.8	10~20	700	1800	
A-411G	GW,BW,GGn,BGn	GaP	Green	Common Anode	565	30	100	30	160	1.7	2.1	2.8	10~20	700	1600	
A-411Y	GW,BW,GY,BY	GaAsP/GaP	Yellow		585	30	100	30	160	1.7	2.1	2.8	10~20	600	1500	

Remark 1 : Selection of Surface color & Segment color

GW : Grey surface & White segment
 BW : Black surface & White segment
 BR : Black surface & Red segment
 RR : Red surface & Red segment

GGn : Grey surface & Green segment
 BGn : Black surface & Green segment
 GY : Grey surface & Yellow segment
 BY : Black surface & Yellow segment

*****Please indicate Surface Color & Segment Color when place order or request samples. *****

For example : C-411G GGn is 0.40 inch Single digit display with Grey Surface & Green Segment.

Normally, GW (Grey surface & White segment) is standard product.

◆ ABSOLUTE MAXIMUM RATING: (Ta=25°C)

Reverse Voltage	: 5 Volt
Reverse Current(Vr = 5V)	: 10 μ A
Operating Temperature Range	: -40°C to +85°C
Storage Temperature Range	: -40°C to +100°C
Lead Soldering Temperature	: 260°C for 5 Seconds
(1.6mm(1/16inch) from body)	

◆ ELECTRO-OPTICAL CHARACTERISTICS: (Ta=25°C)

Para meter Description	Symbol	Unit
Spectral Line half-Width	$\Delta\lambda$	nm
Power Dissipation	Pd	mW
Peak Forward Current (Duty 1/10,@KHz)	If(Peak)	mA
Recommended Operation Current	If(Rec)	mA
Average Luminous intensity (If = 10mA)	Iv	mcd