

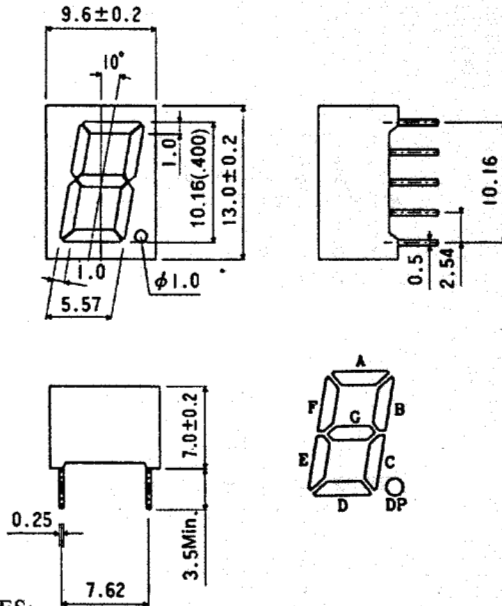
# C/A-421X series ...

## 10.16mm(0.40inch) SINGLE DIGIT DISPLAY

### MAIN FEATURES :

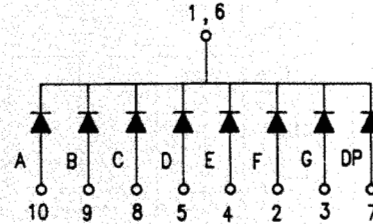
- ⊙ 10.16mm(0.40inch) HIGH CHARACTER
- ⊙ EXCELLENT CHARACTER APPEARANCE
- ⊙ COMMON CATHODE AND COMMON ANODE
- ⊙ I.C. COMPATIBLE
- ⊙ LOW POWER CONSUMPTION

### ◆ PACKAGE DIMENSIONS

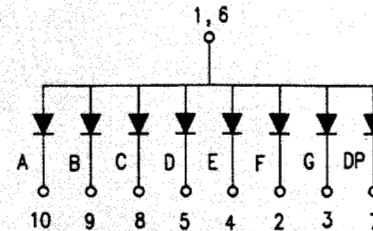


### ◆ PIN CONNECTION AND INTERNAL CIRCUIT

C-421X



A-421X



#### NOTES:

1. All Dimension are in millimeter(inches).
2. Tolerance is  $\pm 0.25\text{mm}(0.010\text{'})$  unless otherwise specified.

### ◆ SELECTION GUIDE AND APPLICATION INFORMATION (RATINGS AT 25°C AMBIENT)

Part No.	Remark 1 Selection of Sur / Seg Color	Chip Raw Material	C.C. or C.A.	Wave Length $\lambda$ (nm)	Absolute Maximum Ratings					Electro-Optical Characteristics					Re- mark 2	
					$\Delta\lambda$ nm	Pd mW	If mA	If (Peak)	Vf(V) Min. Typ. Max.	If (Rec)	Iv ( $\mu$ cd) Min. Typ.					
C-421R	GW,BW,BR,RR	GaAsP	Red	Common Cathode	655	40	110	40	200	1.5	1.7	2.0	10~20	200	450	
C-421H	GW,BW,BR,RR	GaP	Bright Red		700	90	45	15	50	1.7	2.1	2.8	5~10	300	550	
C-421E	GW,BW,BR,RR	GaAsP/GaP	Hi. effi Red		635	45	100	30	160	1.7	2.0	2.8	10~20	700	1800	
C-421G	GW,BW,GGn,BGn	GaP	Green		565	30	100	30	160	1.7	2.1	2.8	10~20	700	1600	
C-421Y	GW,BW,GY,BY	GaAsP/GaP	Yellow	585	30	100	30	160	1.7	2.1	2.8	10~20	600	1500		
A-421R	GW,BW,BR,RR	GaAsP	Red	Common Anode	655	40	110	40	200	1.5	1.7	2.0	10~20	200	450	
A-421H	GW,BW,BR,RR	GaP	Bright Red		700	90	45	15	50	1.7	2.1	2.8	5~10	300	550	
A-421E	GW,BW,BR,RR	GaAsP/GaP	Hi. effi Red		635	45	100	30	160	1.7	2.0	2.8	10~20	700	1800	
A-421G	GW,BW,GGn,BGn	GaP	Green		565	30	100	30	160	1.7	2.1	2.8	10~20	700	1600	
A-421Y	GW,BW,GY,BY	GaAsP/GaP	Yellow	585	30	100	30	160	1.7	2.1	2.8	10~20	600	1500		

Remark 1 : Selection of Surface color & Segment color

- |                                    |                                     |
|------------------------------------|-------------------------------------|
| GW : Grey surface & White segment  | GGn : Grey surface & Green segment  |
| BW : Black surface & White segment | BGn : Black surface & Green segment |
| BR : Black surface & Red segment   | GY : Grey surface & Yellow segment  |
| RR : Red surface & Red segment     | BY : Black surface & Yellow segment |

\*\*\*\*\*Please indicate Surface Color & Segment Color when place order or request samples. \*\*\*\*\*

For example : C-421E BR is 0.40 inch Single digit display with Black Surface & Red Segment.

Normally, GW ( Grey surface & White segment ) is standard product.

### ◆ ABSOLUTE MAXIMUM RATING: (Ta=25°C)

Reverse Voltage	: 5 Volt
Reverse Current( Vr = 5V )	: 10 $\mu$ A
Operating Temperature Range	: -40°C to +85°C
Storage Temperature Range	: -40°C to +100°C
Lead Soldering Temperature (1.6mm(1/16inch) from body)	: 260°C for 5 Seconds

### ◆ ELECTRO-OPTICAL CHARACTERISTICS: (Ta=25°C)

Para meter Description	Symbol	Unit
Spectral Line half-Width	$\Delta\lambda$	nm
Power Dissipation	Pd	mW
Peak Forward Current (Duty 1/10,@KHz)	If(Peak)	mA
Recommended Operation Current	If(Rec)	mA
Average Luminous intensity (If = 10mA)	Iv	mcd